



2315-2330



Agents Depart TMF, Attacked En Route to Annex



(U) Picture taken sometime after 11 September attack shows the Main Building and main driveway of the Temporary Mission Facility.



2315

ICONS

CAMS

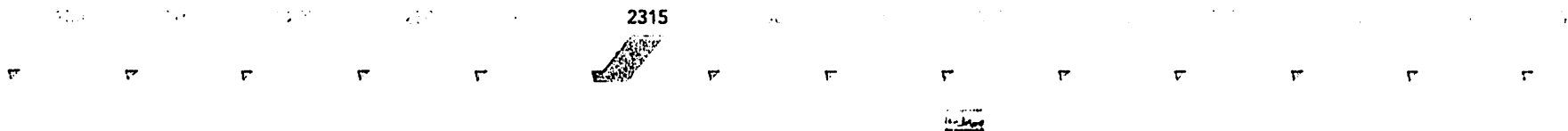


2315-2330



Agents Depart TMF, Attacked En Route to Annex

- Security situation at TMF worsening

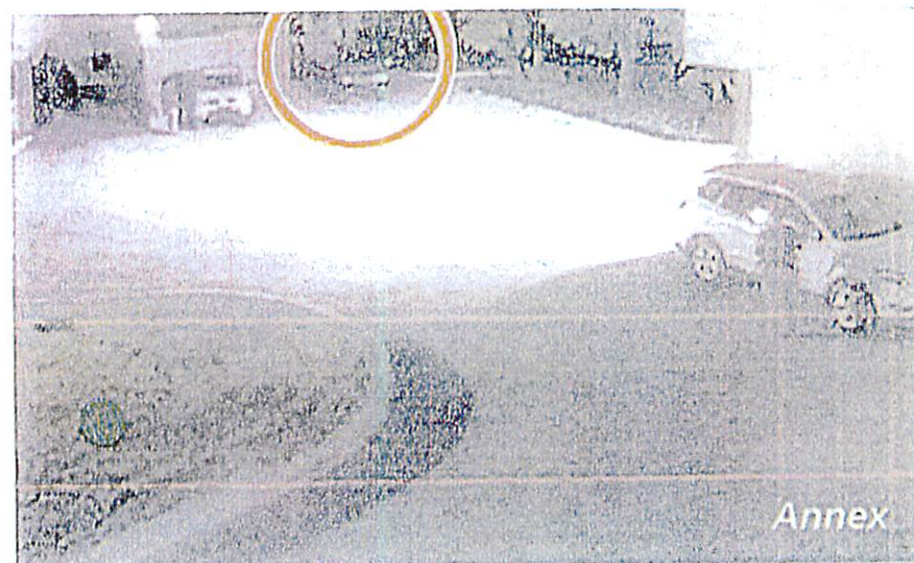
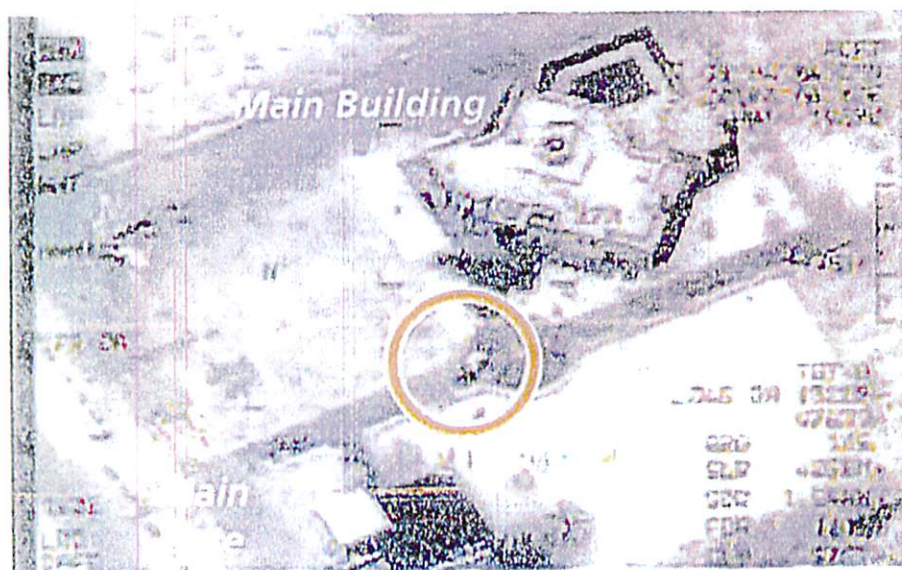




2330-2345



Annex Team Departs TMF and Arrives at Annex, All US Personnel at Annex Except Ambassador





2330-2345



Annex Team Departs TMF and Arrives at Annex, All US Personnel at Annex Except Ambassador

- All US personnel, except the Ambassador, are now at the Annex



2330

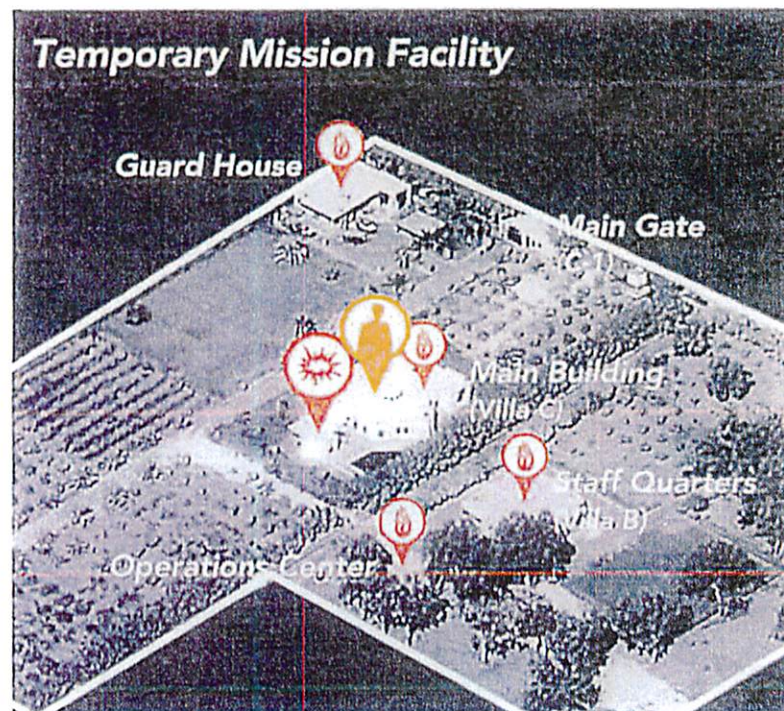




2345-0100



Looting and Explosions at TMF, Tripoli Team En Route to Benghazi





2345-0100



Looting and Explosions at TMF, Tripoli Team En Route

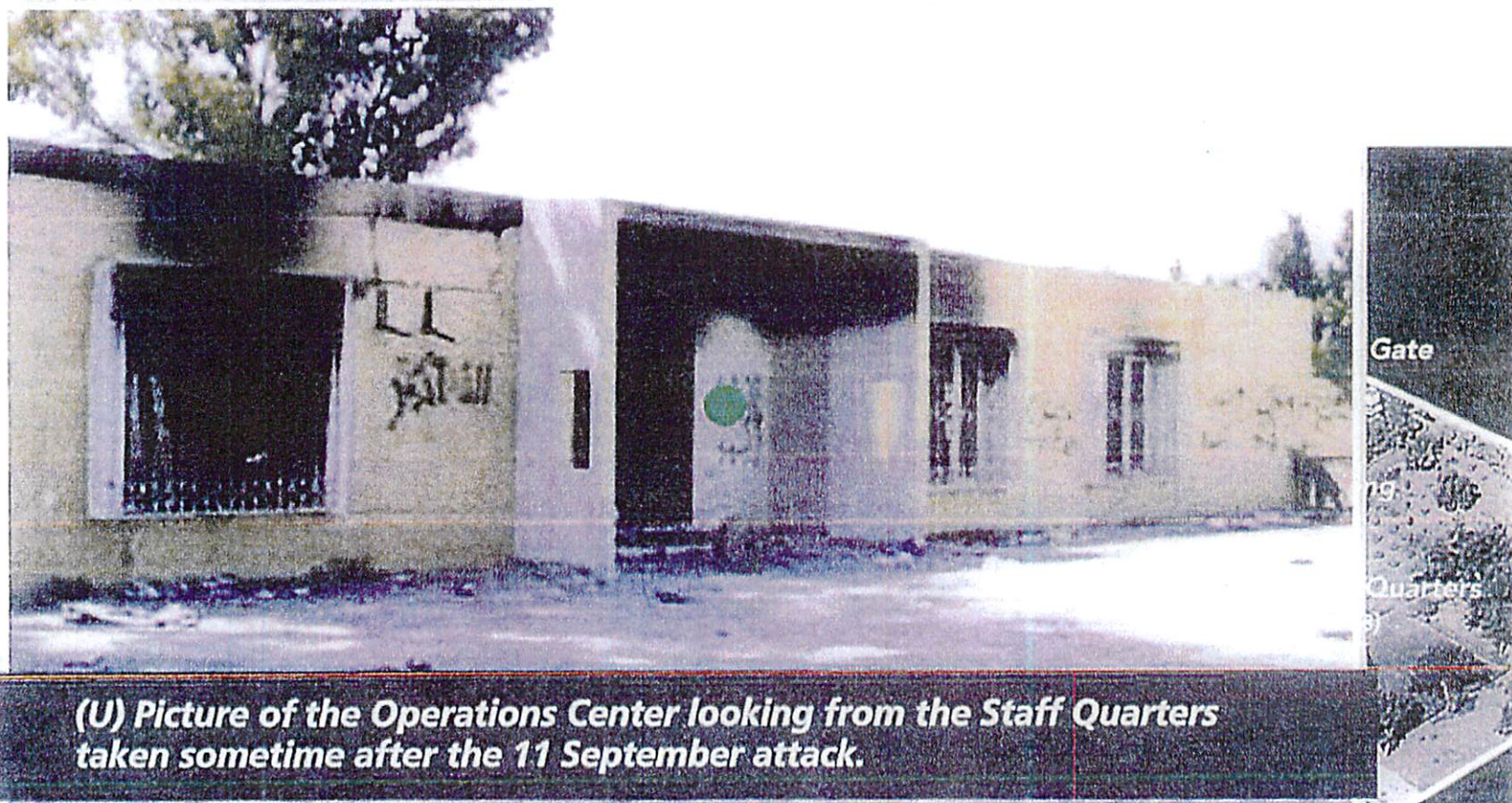




2345-0100



Looting and Explosions at TMF, Tripoli Team En Route





2345-0100



Looting and Explosions at TMF, Tripoli Team En Route to Benghazi

- TMF not secure



- Locals loot TMF

2345

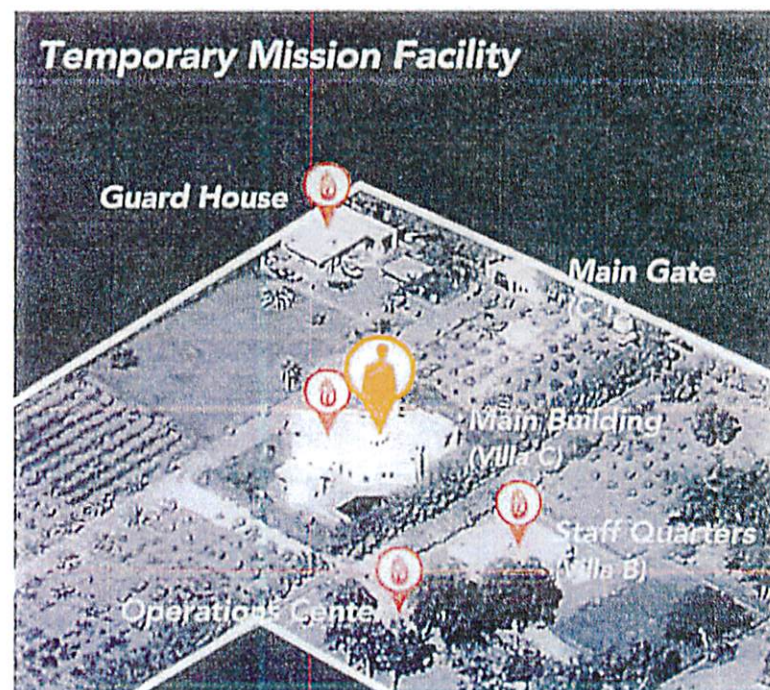
2345



0100-0115



Locals Find Ambassador and Take Him to Hospital, Annex Attacked



0100



0100-0115



Locals Find Ambassador and Take Him to Hospital, Annex Attacked

- Locals find Ambassador and take him to hospital ●
- First major attack on Annex is repulsed, followed by a lull

0100



0115-0400



Tripoli Team Arrives in Benghazi, US Learns of Ambassador's Death





Tripoli Team Travels from Airport to Annex with Libyan Militia





0430-0515



Tripoli Team Travels from Airport to Annex with Libvan Militia

- Security at the Annex increases



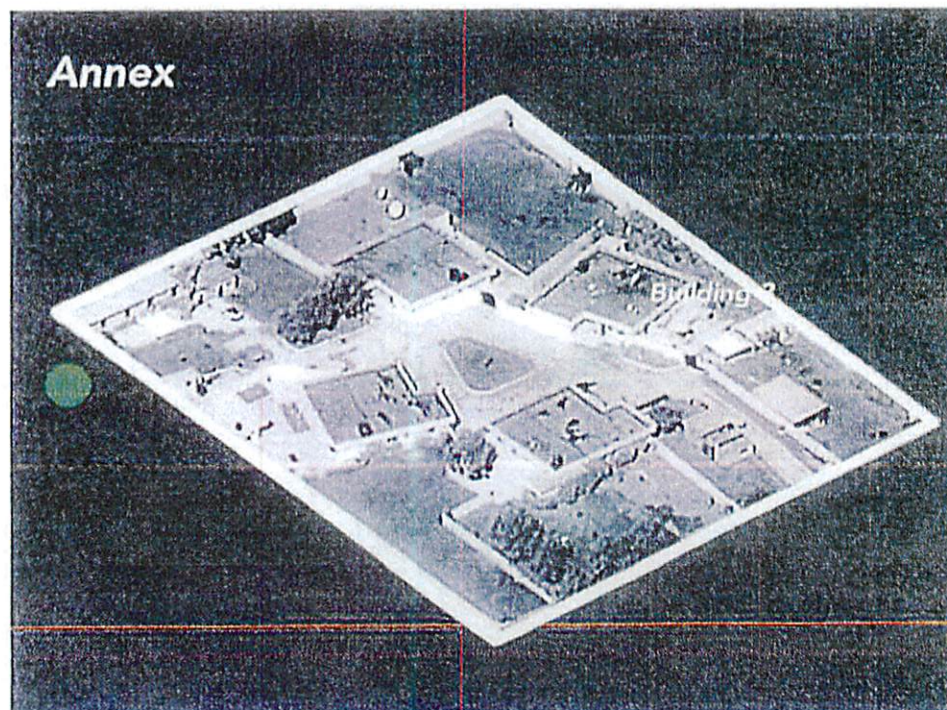
0430



0515-0530



Mortar Attack on Annex, Libyan Militia Departs



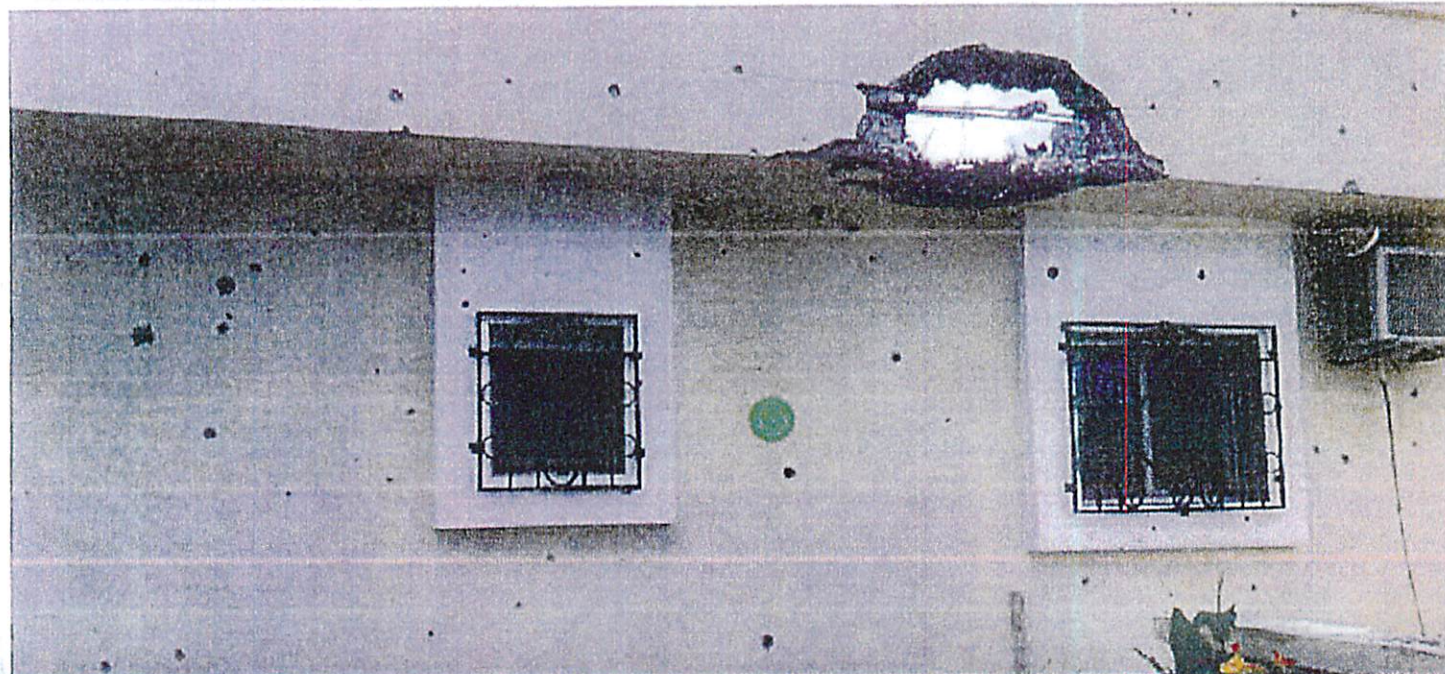
0515



0515-0530



Mortar Attack on Annex, Libyan Militia Departs



(S//NF) Picture of the side of Annex Building 3 taken sometime after the 12 September morning attack. Note the bullet holes and large hole where a probably mortar hit.

0515



0515-0530



Mortar Attack on Annex, Libyan Militia Departs



(S//NF) Picture of the roof of Annex Building 3 taken sometime after the 12 September morning attack. Note the bullet holes and mortar impact points.

Slide Removed for Law Enforcement Sensitive Information



0515-0530



Mortar Attack on Annex, Libyan Militia Departs

- Attackers struck from multiple directions at the same time
- Security situation degraded following the attack



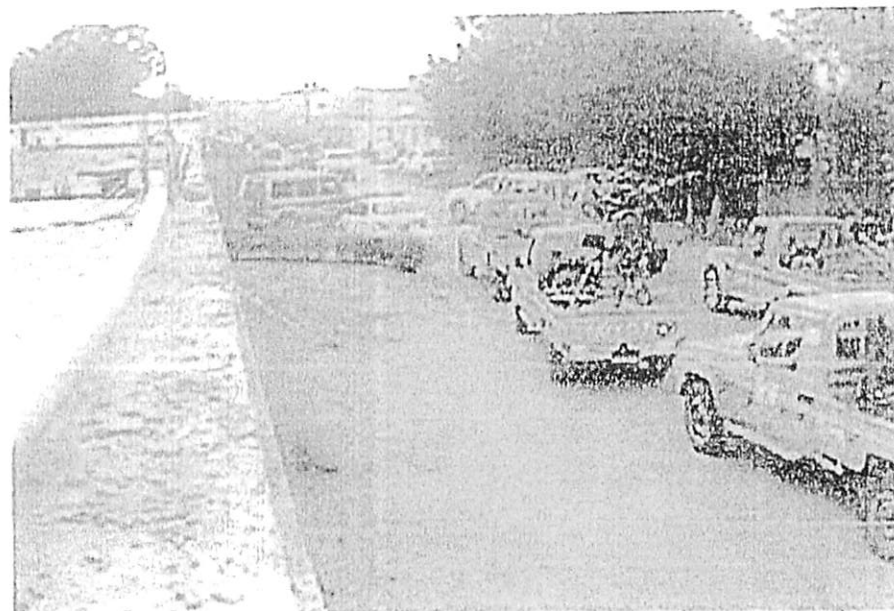
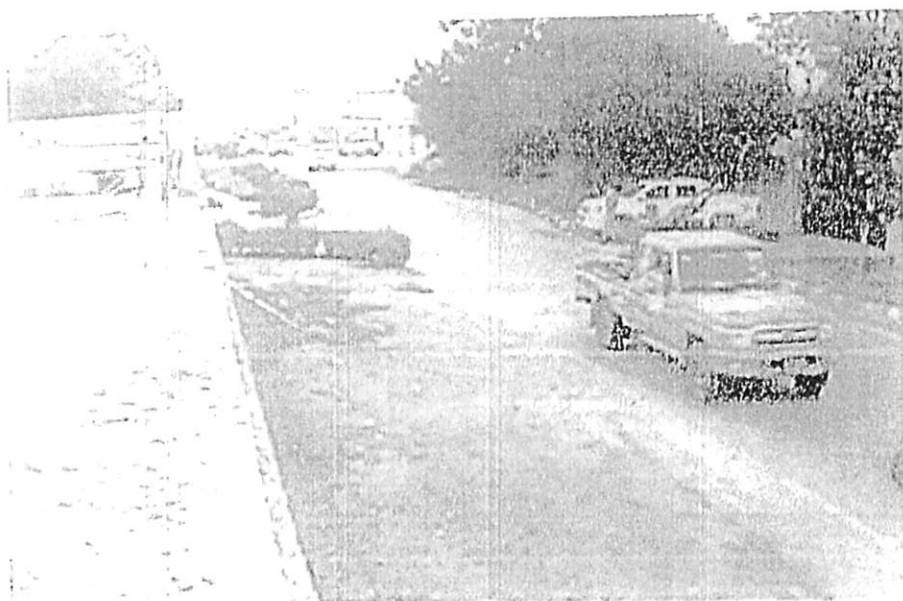
0515



0600-0645



US Evacuates Annex



0600



0600-0645



US Evacuates Annex

- Libyans return in force
- US personnel en route to airport



0600



0700-1135



Americans Evacuate to Tripoli

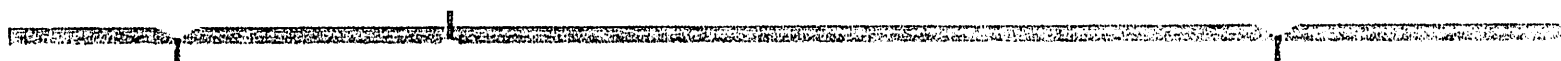
0730

The first aircraft
with Americans
departs Benghazi.



1000

All remaining
Americans depart
Benghazi on a
second aircraft.



0825

Libyans bring
Ambassador's
remains to Benina
International Airport.

1135

The second aircraft
arrives in Tripoli.
All US personnel
in Tripoli.





0700-1135



Americans Evacuate to Tripoli

0730
The first aircraft
with American
personnel
departs Beirut.



1135
The second aircraft
arrives in Tripoli.
American personnel
are evacuated to
Tripoli.

(S/INT) Still from Predator video shows the convoy of US personnel at their aircraft.

0700

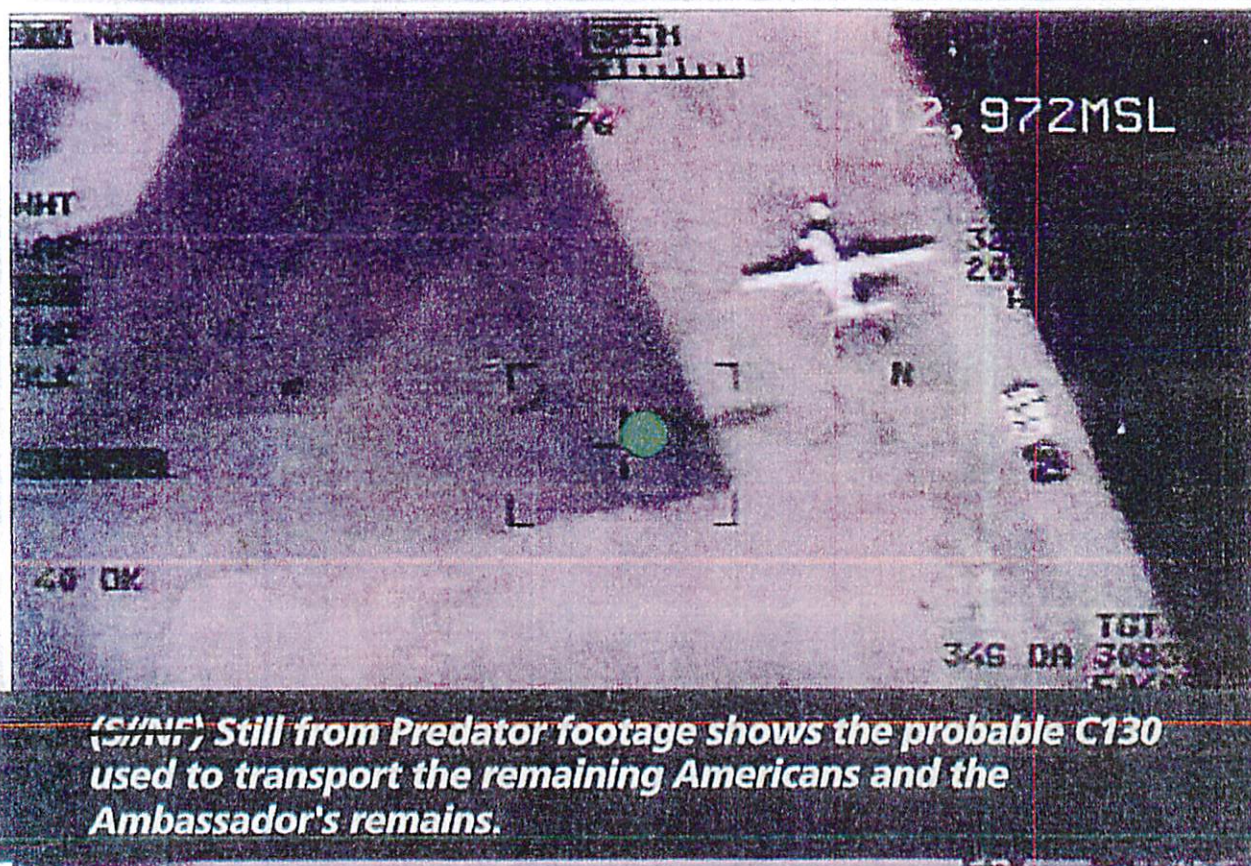


0700-1135



Americans Evacuate to Tripoli

0730
The first aircraft
with Americans
departs Beirut.



1135

second aircraft
arrives in Tripoli.
US personnel
evacuated to Tripoli.

0700



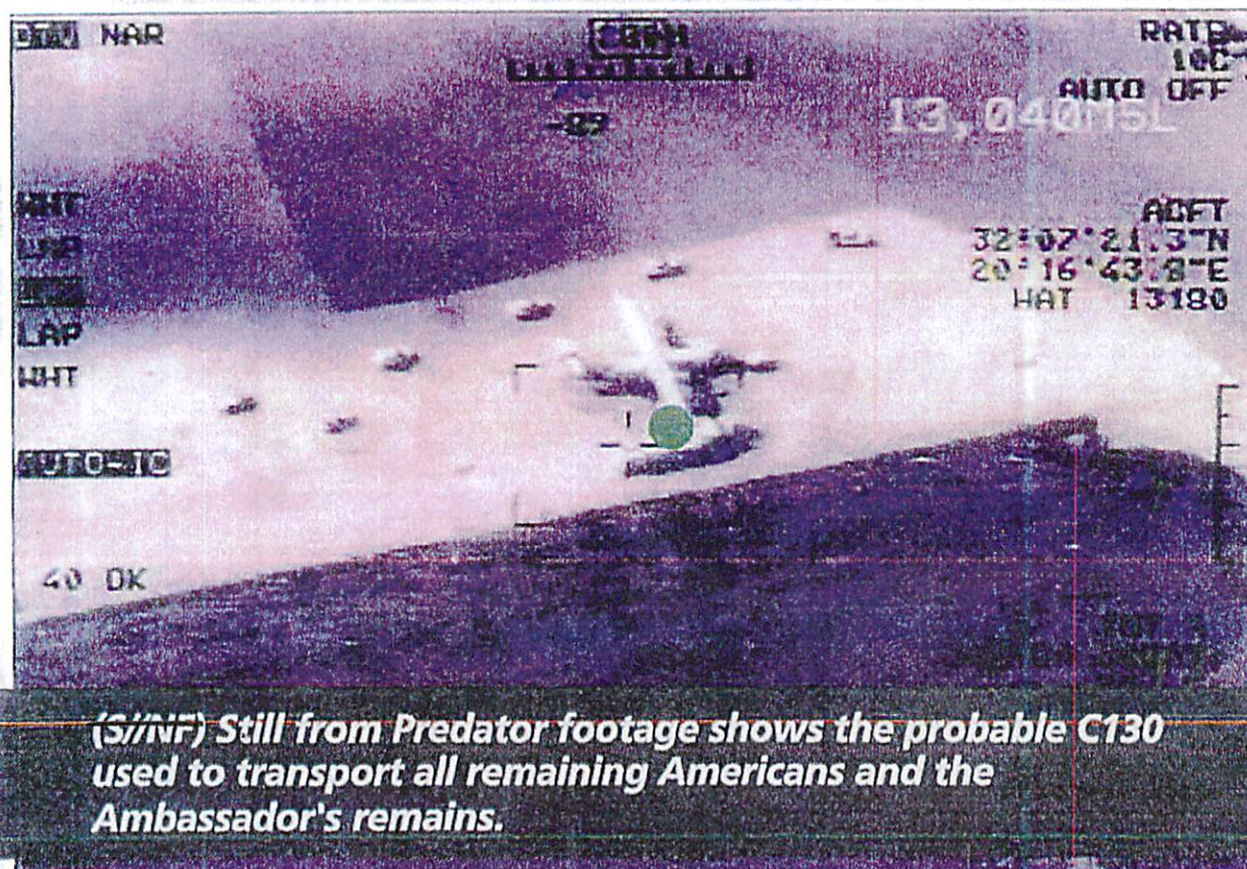
0700-1135



Americans Evacuate to Tripoli

0730

The first aircraft
with Americans
departs Beirut



1135

second aircraft
arrives in Tripoli.
US personnel
evacuated to Tripoli.

0700

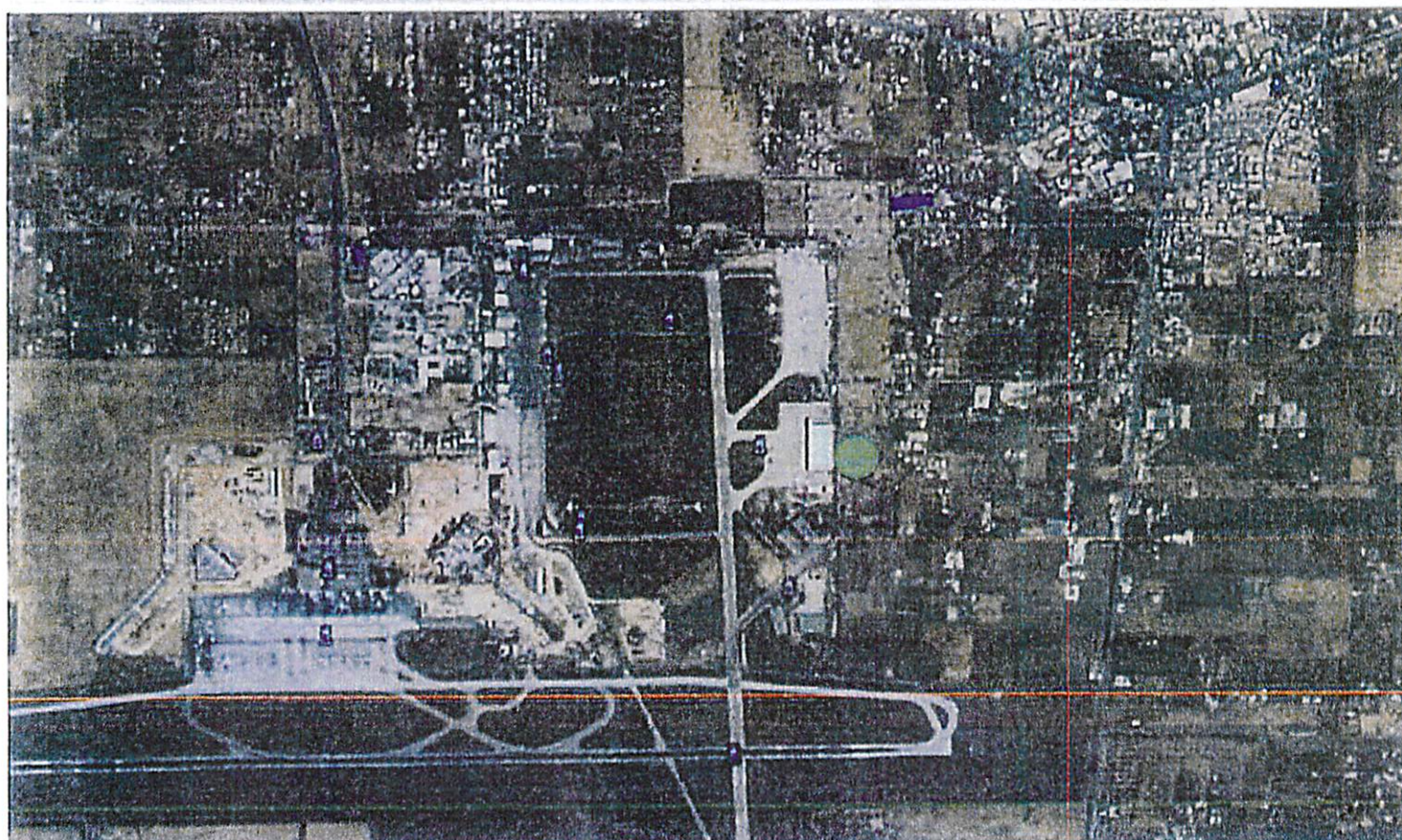


0700-1135



Americans Evacuate to Tripoli

The f
with
depart



aircraft
poli.
nnel

0700



Initial TWR attack appeared to be opportunistic

11-12 September attacks were multiple, separate events

Second Annex attack appears coordinated